



# **Industrial Land Banks in Arunachal Pradesh**

## **Survey Report**

1. Niglok IGC, East Siang District
2. Nigmoi IA, West Siang District
3. Bam IIDC, Lepa Rada District
4. Akashi Ganga, Likabali, Lower Siang District
5. Tourist Lodge, Oyan, East Siang

June 2023

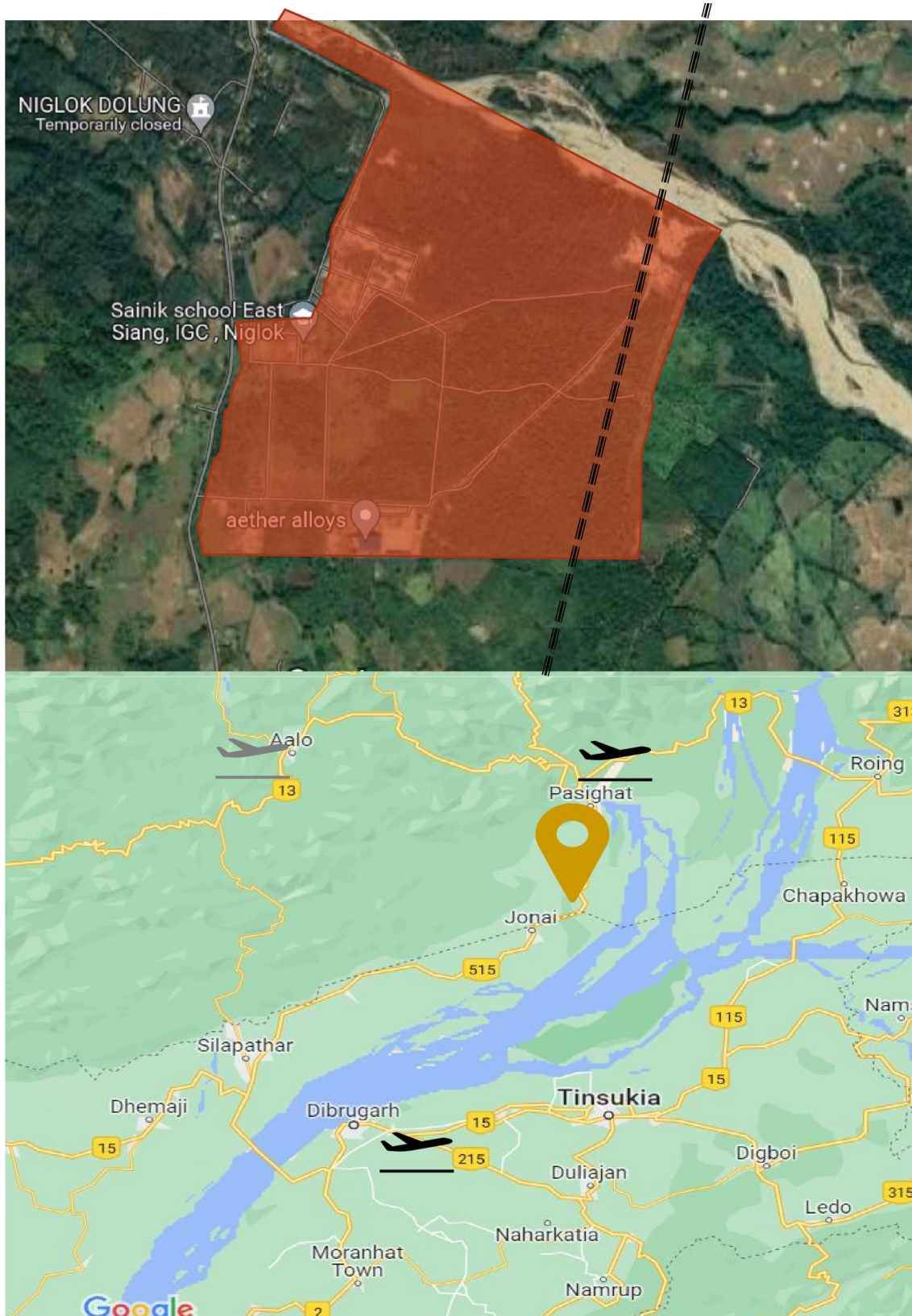
## Location of the four industrial land banks



1. Niglok IGC, East Siang District
2. Nigmoi IA, West Siang District
3. Bam IIDC, Lepa Rada District
4. Akashi Ganga, Likabali, Lower Siang District
5. Tourist Lodge at Oyan, East Siang District

1

## Industrial Growth Centre in Niglok





Niglok Industrial Growth Centre is located near Niglok village in Ruksin circle of East Siang district in Arunachal Pradesh. The site has 2 water reservoirs with a capacity of 179200 litres in its proximity. The nearest town is Pasighat which is the district headquarters and hosts commercial bank, post office, shopping complex, etc.



Available area – 28 Acres



Situated along National Highway 515, 43 KM from district headquarter Pasighat.



Nearest Airports are Pasighat airport (41 KM), Dibrugarh airport (120 KM) and Lilabari airport (185 KM).



Nearest Railway Station is Murkongselek Railway Station (5KM). Work is ongoing to connect Murkongselek to Pasighat.



33/11 KV power supply is available, work on 132/33 KV line is ongoing



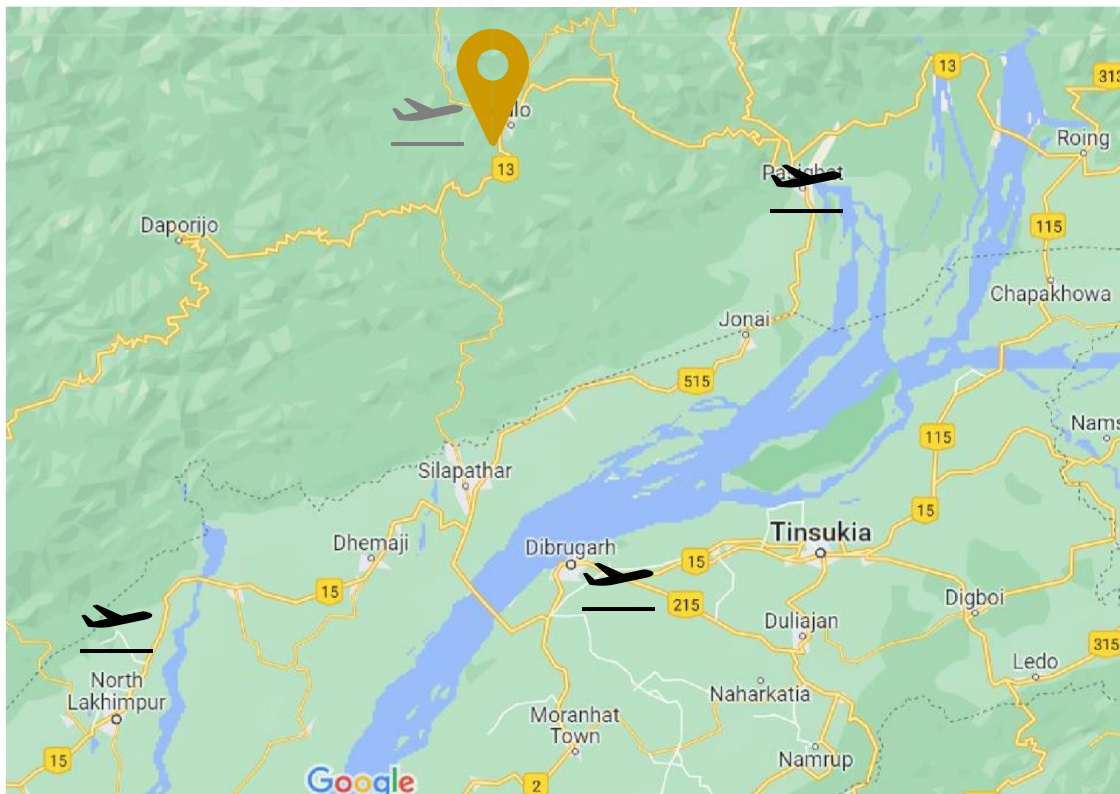
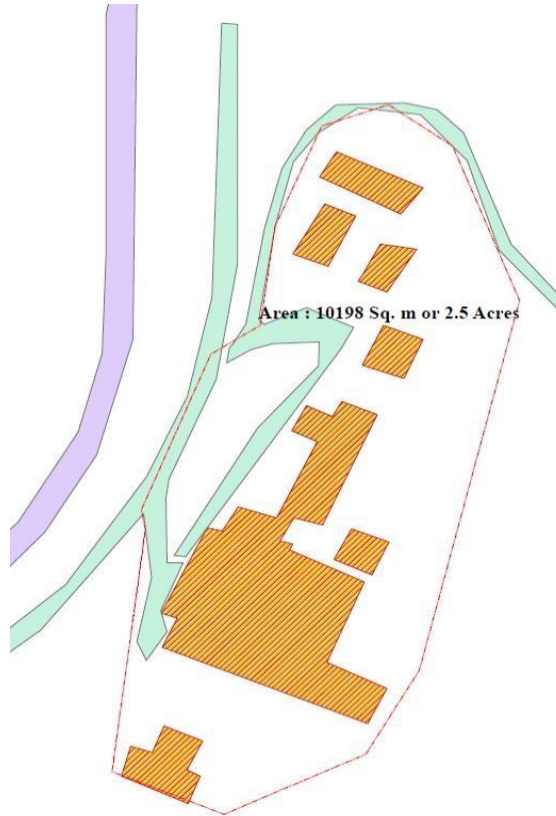
Key hinterland Produces include Oranges, pineapple, sugarcane

---



## 2

## Industrial Area in Nigmoi



Nigmoi Industrial Area is located near Nigmoi village which is located in Bagra circle of West Siang district in Arunachal Pradesh. The site used to have a food processing unit which is defunct now. The nearest town is Aalo, the district capital of West Siang, that hosts hospitals, police stations, hotels and other social infrastructure.



Available area – 2.5 acres (approx)



Situated along National Highway 13, 16 KM from Aalo Town and 30 KM from Basar Town



Nearest Airports are Pasighat airport (122 KM) and Dibrugarh airport (222 KM). Aalo Town has one helipad.



Nearest Railway Station is Murkongselek Railway Station (131 KM) and Silapathar Railway Station (147 KM). Work is ongoing to connect Murkongselek to Pasighat.



33/11 KV power supply is available, work on 132/33 KV line is ongoing



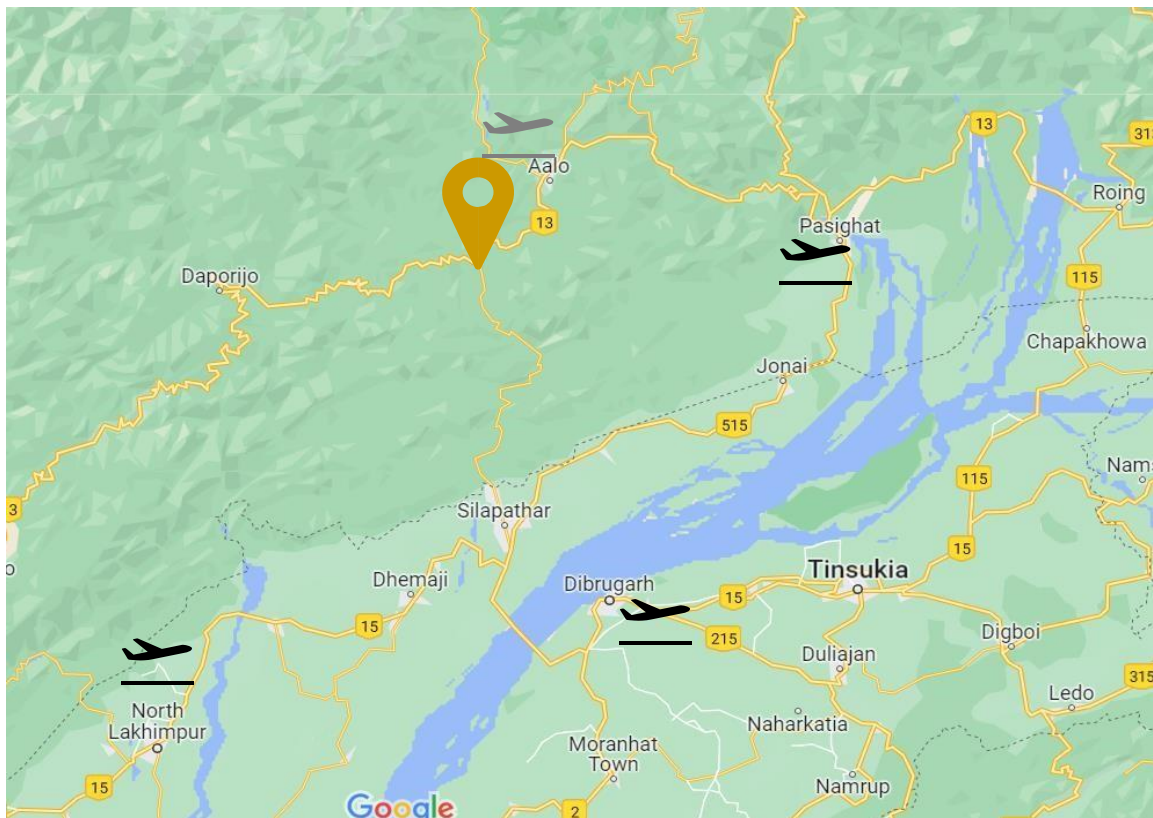
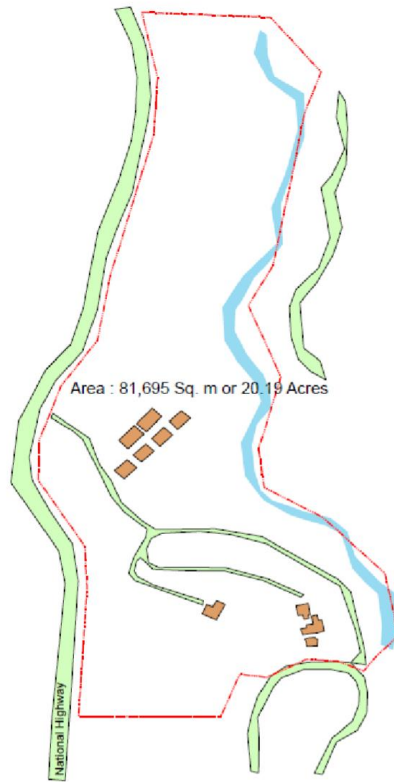
Key hinterland Produces include Oranges, Pineapple, Sugarcane and Banana

---





## Integrated Infrastructure Development Centre in BAM



Bam Integrated Infrastructure Development Centre is in Basar circle of Lepa Rada district in Arunachal Pradesh, India. The nearest town is Basar, which is the district headquarter, which is frequented by tourists from all parts of India and indulge in adventure sports such as trekking, hiking, camping, etc.



Available area – 20.19 Acres



Situated along National Highway 13, 7 KM from Basar Town and 43km away from district headquarter Aalo



Nearest Airports are Pasighat airport (150 KM) and Dibrugarh airport (150 KM).



Nearest Railway Station is Murkongselek Railway Station (131 Km) and Silapathar Railway Station(147 Kms)

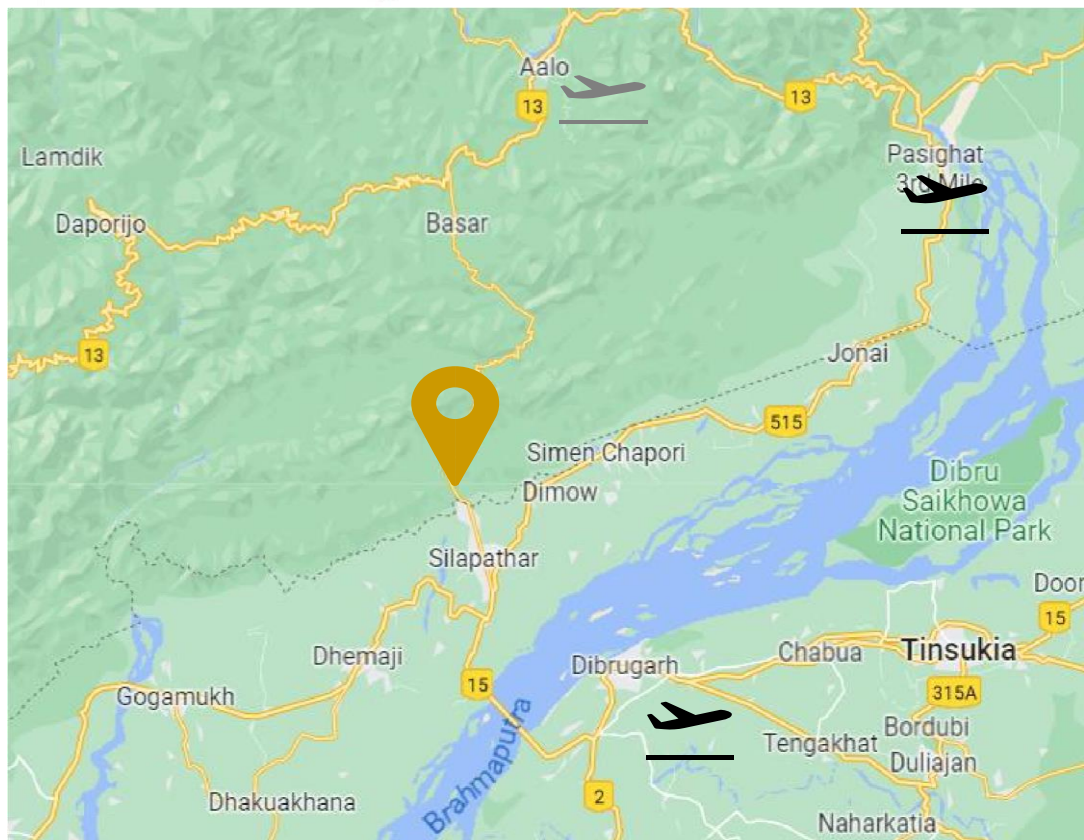
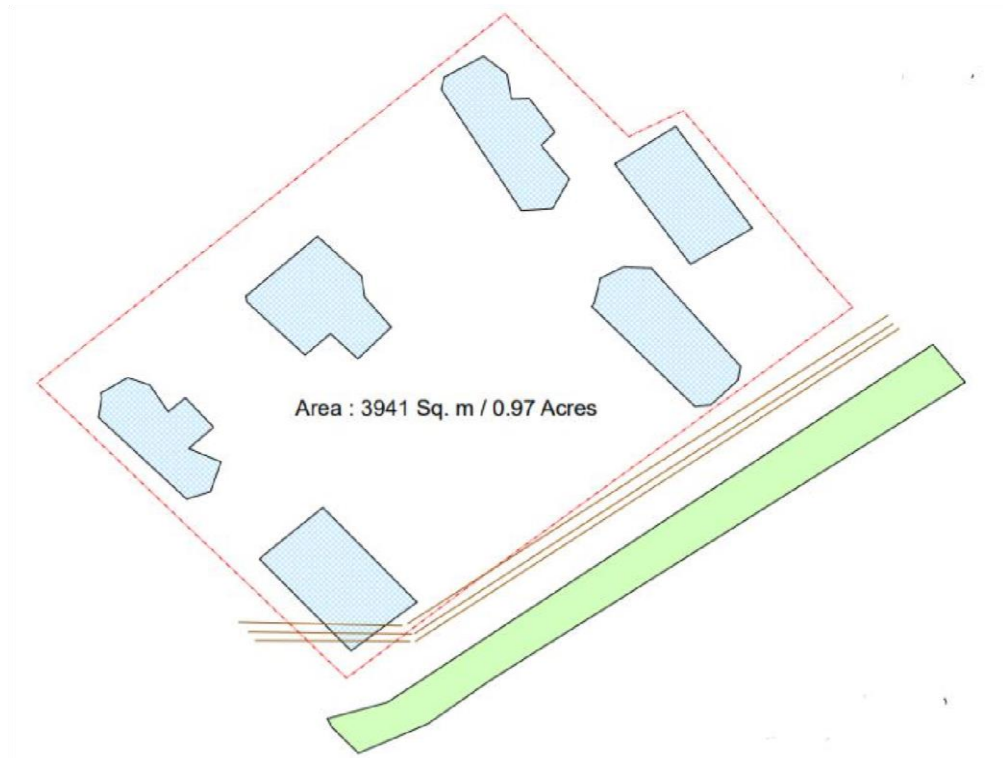


Key hinterland Produces include orange, apple, kiwi, pineapple

---







Akashi Ganga, Likabali is located in Likabali circle of Lower Siang district in Arunachal Pradesh, India. It is situated near one of the most famous Hindu Pilgrimage sites in Arunachal Pradesh. The nearest town is Likabali which is the district headquarter.



Available area – 0.97 Acres



Situated along National Highway 13 and 10KM from Likabali Town



Nearest Airports are Dibrugarh airport (72 KM) and Pasighat airport (113 KM)



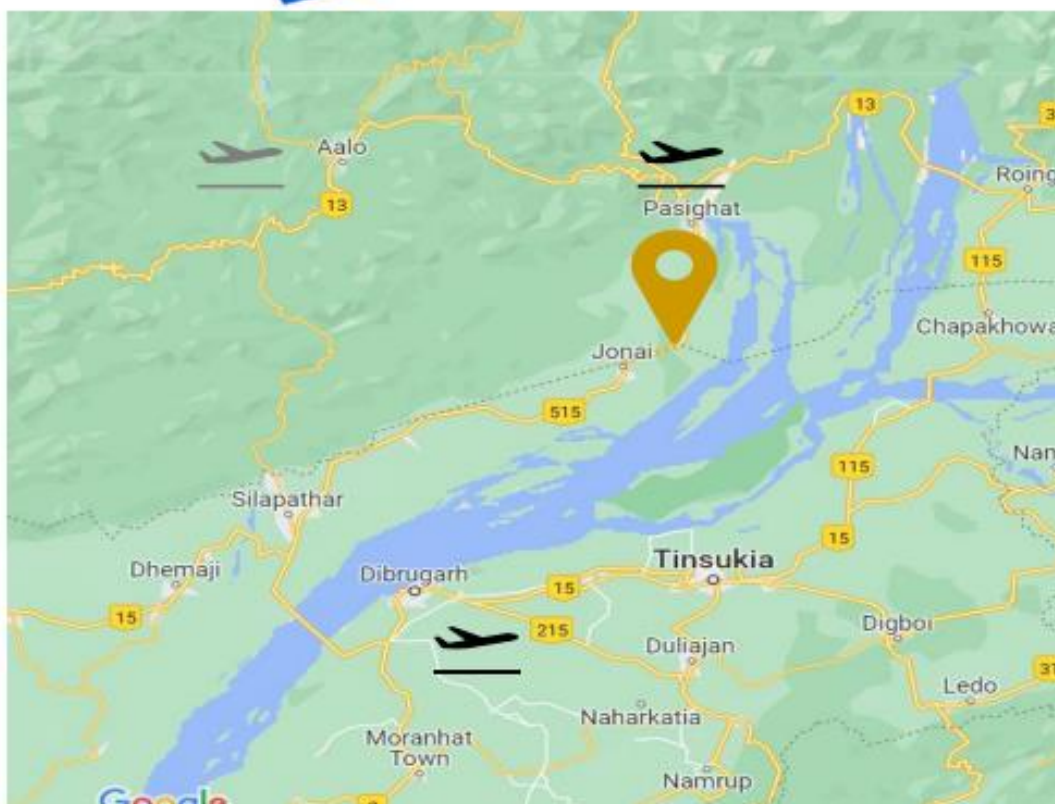
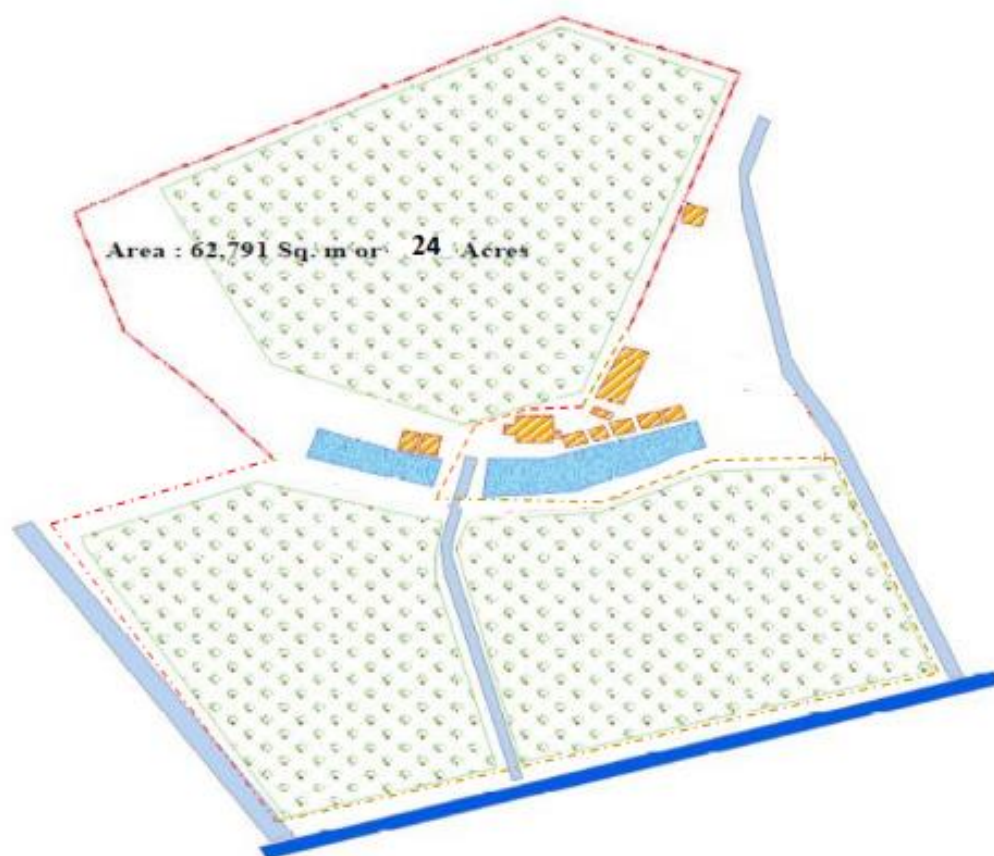
Nearest Railway Station is Silapathar Railways Station ( 13 KM) and Murkongselek Railway Station (77 KM)



Key hinterland Produces include oranges, pineapples

---







Tourist Lodge Site at Oyan is located in Silie Oyan circle of East Siang district in Arunachal Pradesh, India. It comes under Ruksin Community Development Block. The nearest town is Pasighat, which is about 29 kilometers away from Oyan Village.



Available area – 24 Acres



Situated along National Highway 515, 29KM from district headquarter Pasighat.



Nearest Airports are Pasighat airport (23 KM), Dibrugarh airport (125 KM)



Nearest Railway Station is Murkongselek Railway Station (13 KM) Work is ongoing to connect Murkongselek to Pasighat.



33/11 KV power supply is available, work on 132/33 KV line is ongoing



Key hinterland Produces include Oranges, pineapple, sugarcane

---





## Stakeholders Consulted

<b>Niglok Industrial Area, East Siang District</b>	
1	Shri Tayi Taggu , Deputy Commissioner
2	Shri Tatak Mibang, District Planning Officer (DPO)
3	Shri Matsam Jamoh, Deputy Director- Industry
4	Smt. Leena Perme, Transportation Officer- Tourism
<b>Nigmoi Industrial Area, West Siang District</b>	
1	Shri Penta Tato , Deputy Commissioner
2	Shri Marjum Karga, District Planning Officer (DPO)
3	Shri Toyi Rakshap, Deputy Director- Industry
4	Shri K. Kopak, Transportation Officer- Tourism
<b>Bam Integrated Infrastructure Development Centre , Lepa Rada District</b>	
1	Smt. Mamta Riba , Deputy Commissioner
2	Shri Khoda Bath , District Planning Officer (DPO)
3	Shri Marme Loya, Deputy Director- Industry
<b>Akashi Ganga, Likabali, Lower Siang District</b>	
1	Shri Henge Riba , District Planning Officer (DPO)
2	Shri Padang Shangyu, Transportation Officer- Tourism